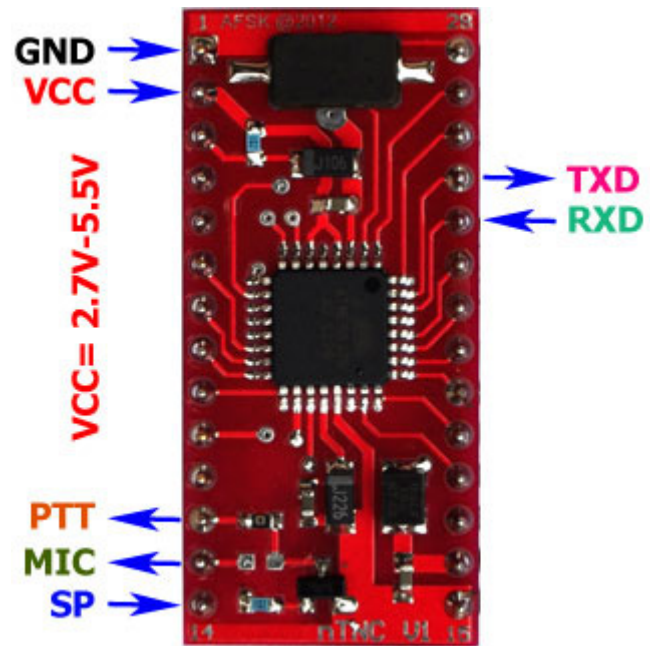
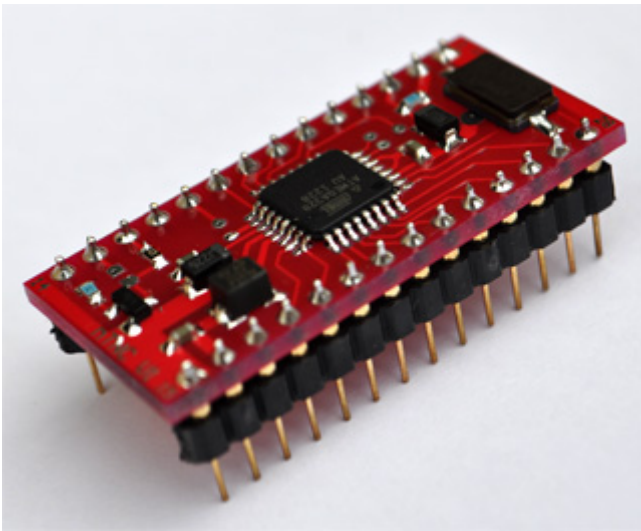


# nTNC-Module V1

## Reference Manual

*Guide for use*

### Pin Connection Easy to Use



NAKHONTHAI NETWORK CO., LTD.  
 589 PhetKasem Rd., NongKhangPhlu, NongKhaem, Bangkok 10160  
<http://www.nakhonthai.net> Tel:(662)8697761 Fax:(662)8698106

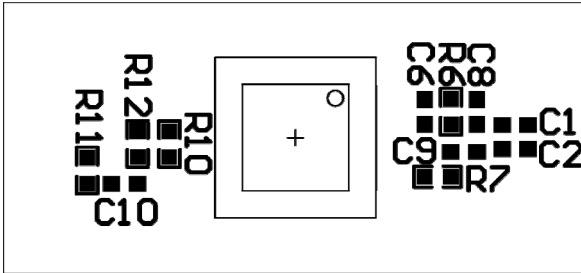
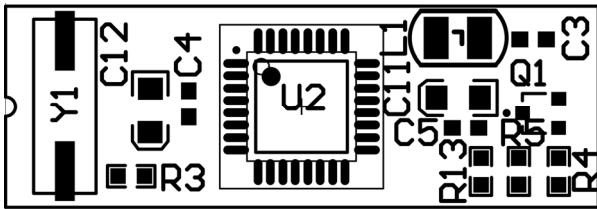
### Pin Definitions

Pins	Type	Pin name	Description
1	S	GND	Digital Ground
2	S	VCC	+VCC 2.7V-5.5V
3	I	RES	RESET Active Low
4	GPIO	PB0	General Port Input Output
5	GPIO	PB1	General Port Input Output
6	GPIO	PB2	General Port Input Output
7	GPIO	PB3	General Port Input Output
8	GPIO	PB4	General Port Input Output
9	GPIO	PB5	General Port Input Output
10	Z	ADC	Analog Input (Voltage)
11	GPIO	PD7	General Port Input Output
12	O	PTT	Active Pull Down
13	O	MIC	Audio Output
14	I	SP	Audio Input

### Pin Definitions(Continued)

Pins	Type	Pin name	Description
15	S	GND	Analog Ground
16	S	AVCC	Analog VCC 2.7V-5.5V
17	S	AREF	Analog Ref. +1.25V
18	GPIO	PC0	General Port Input Output
19	GPIO	PC1	General Port Input Output
20	GPIO	PC2	General Port Input Output
21	GPIO	PC3	General Port Input Output
22	GPIO	PC4	General Port Input Output
23	GPIO	PC5	General Port Input Output
24	I	RXD	UART TTL RX Input
25	O	TXD	UART TTL TX Output
26	I	CTS	Clear To Send Sig.
27	O	RTS	Request To Send Sig.
28	O	STS	Status Output

## Layout



Part List	Description
C2,C5,C6,C7,C9	0.1uF [0603] Chip Capacitor
C3,C4	10pF [0603] Chip Capacitor
C10,C11	10nF [0603] Chip Capacitor
C1,C8	10uF/6.3V Capacitor
L1	10uH Inductor
Q1	2N7002 MOSFET-N
R1,R5	10KΩ [0603] Chip Resistor
R8,R9	1.5KΩ [0603] Chip Resistor
R4,R6	1KΩ [0603] Chip Resistor
R2	330Ω [0603] Chip Resistor
R3	100Ω [0603] Chip Resistor
Y1	18.432MHz Crystal Oscillator

## Circuit Details

